



RE-THINKING SOLAR



February 2017





IN THE LAST 40 YEARS

.....
*solar panels have
remained unchanged*



TODAY'S SOLAR PANEL

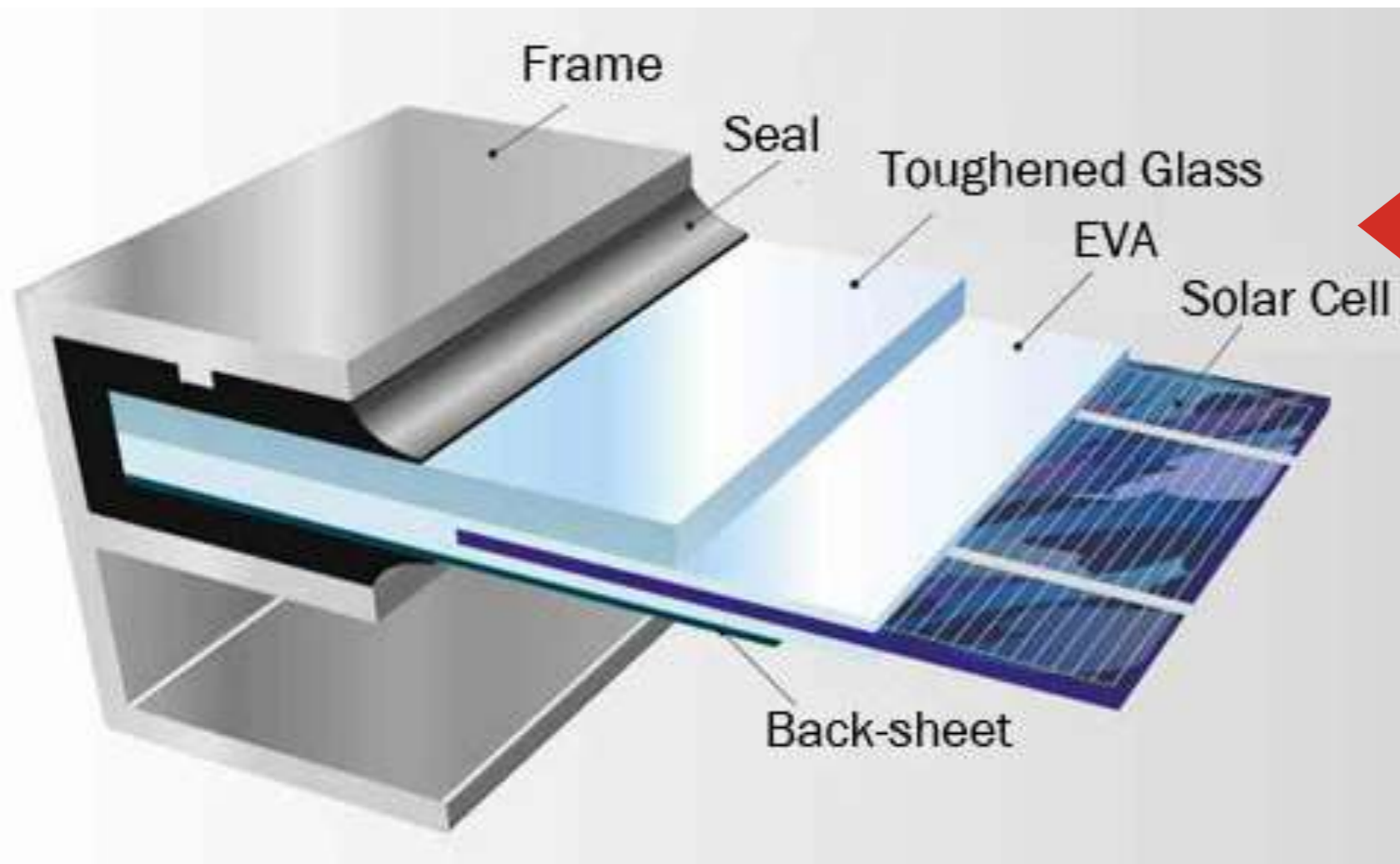
.....



- › Aluminium frames
- › Plastic Back sheet
- › Glass top
- › Aluminium frames
- › Plastic Back sheet
- › Glass top

WEIGHT / THICKNESS – CONVENTIONAL SOLAR PANEL

.....



Weight of solar panel = 20 kg

Weight of solar cells = 720 g

**Only 3.6% makes
electricity**

Thickness of panel = 40 mm

Thickness of cell = 0.5 mm

**0.0125% makes
electricity**

LIMITATIONS



- Heavy
- Inflexible
- Only mass-produced in 2 sizes
- Limited scope for further cost reductions



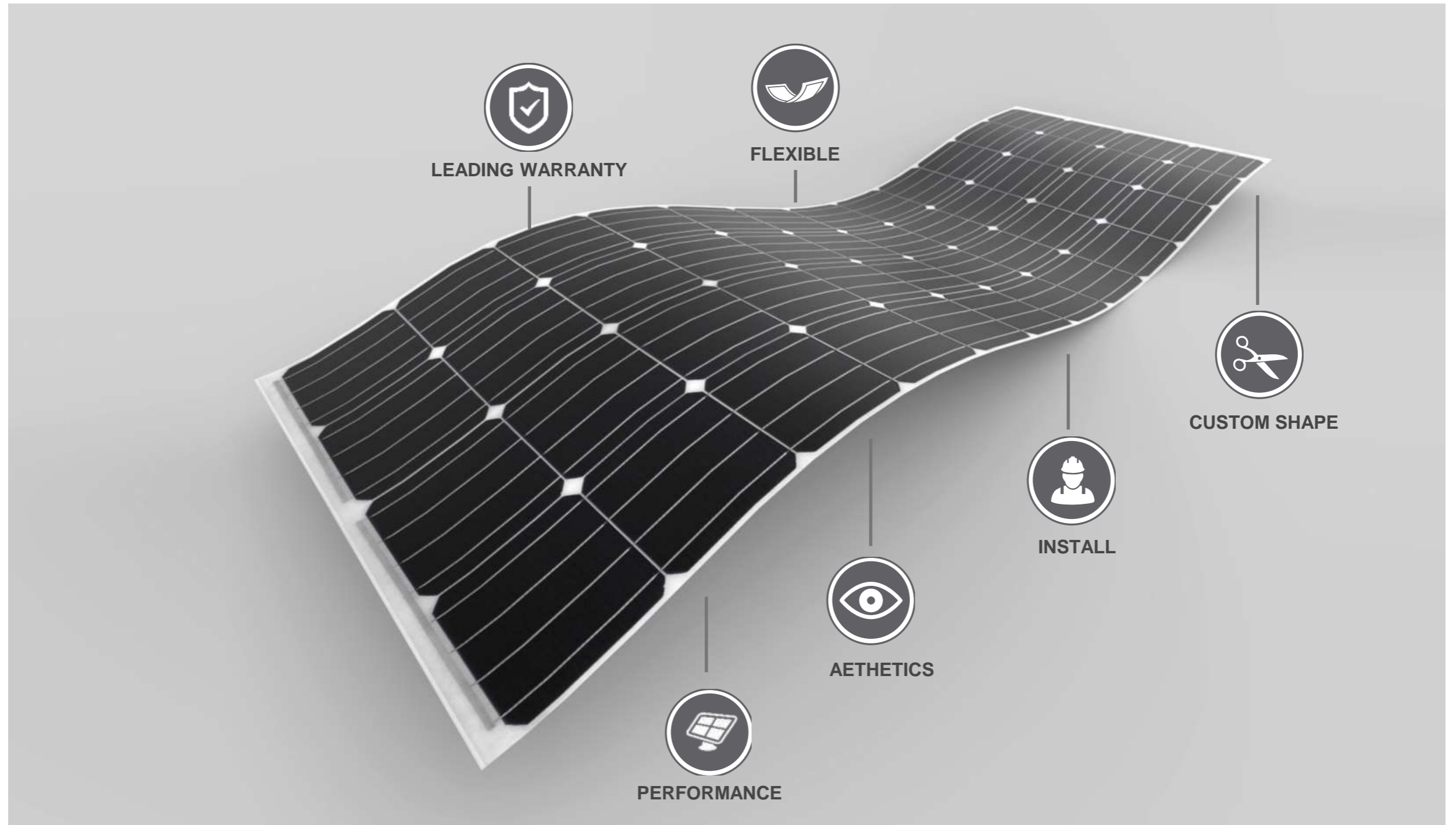
THE SOLUTION

.....

*Turn all building skins
into green electricity
generators*



enerigus



KEY PRODUCT FEATURES

No compromises to.....



- **Performance**
Performs the same as conventional panels



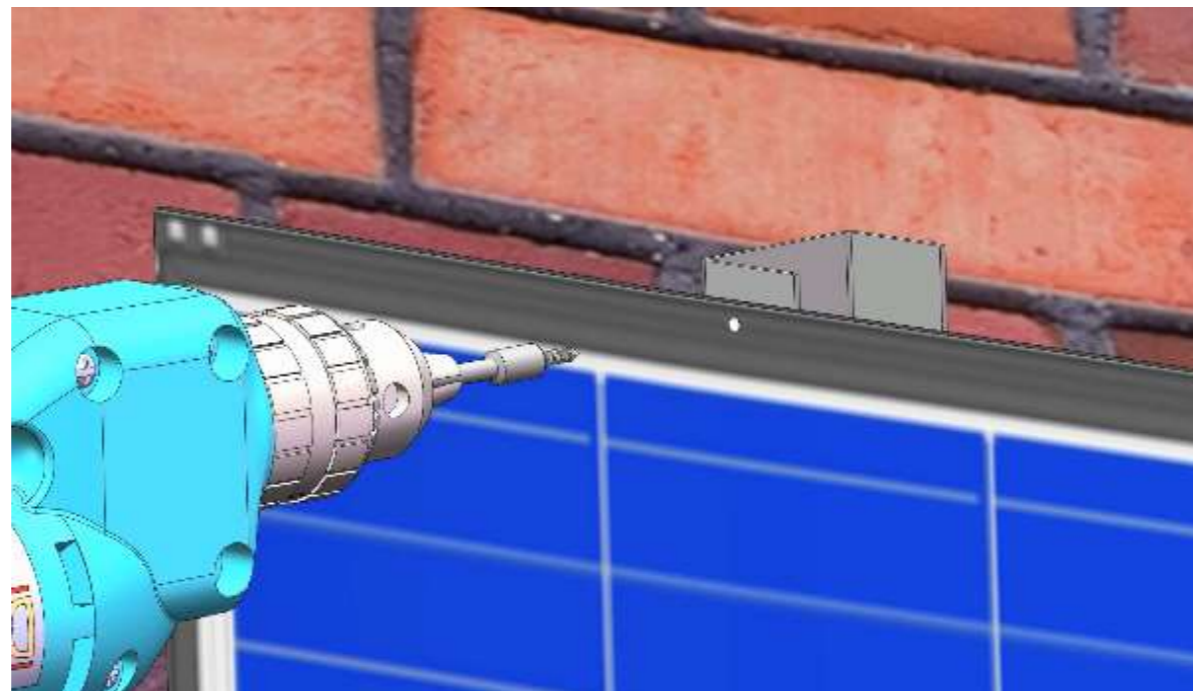
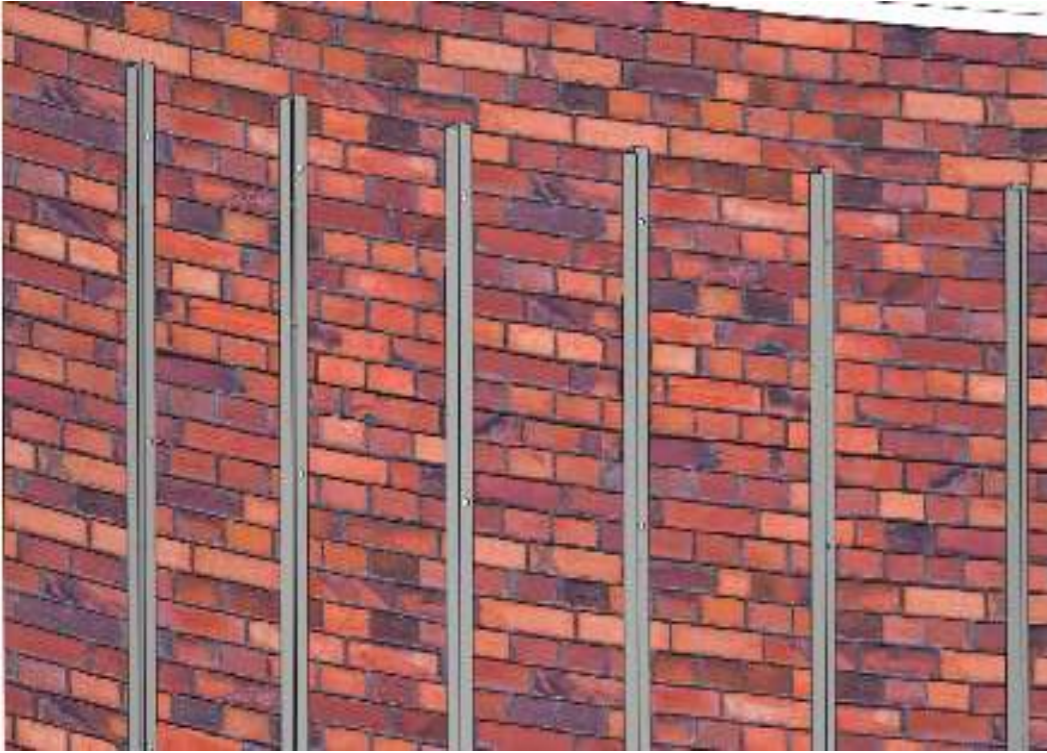
- **Price**
Competitive with conventional panels



- **Durability**
Passes the same durability test as conventional panels

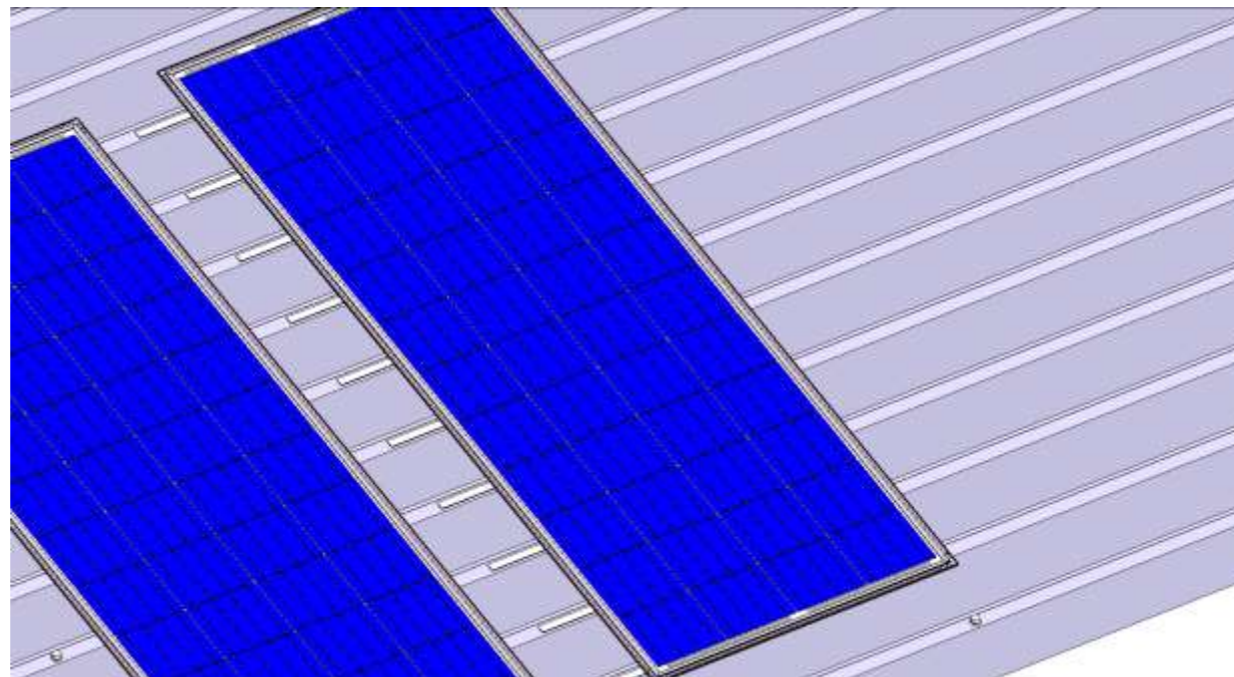
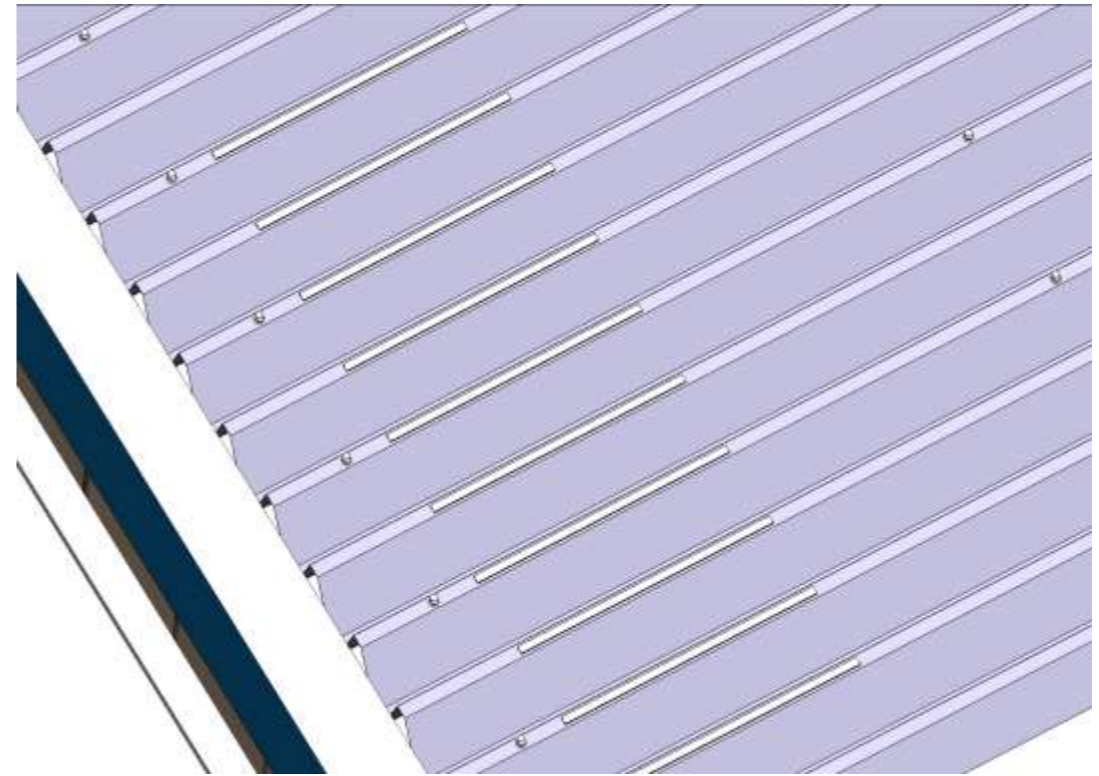
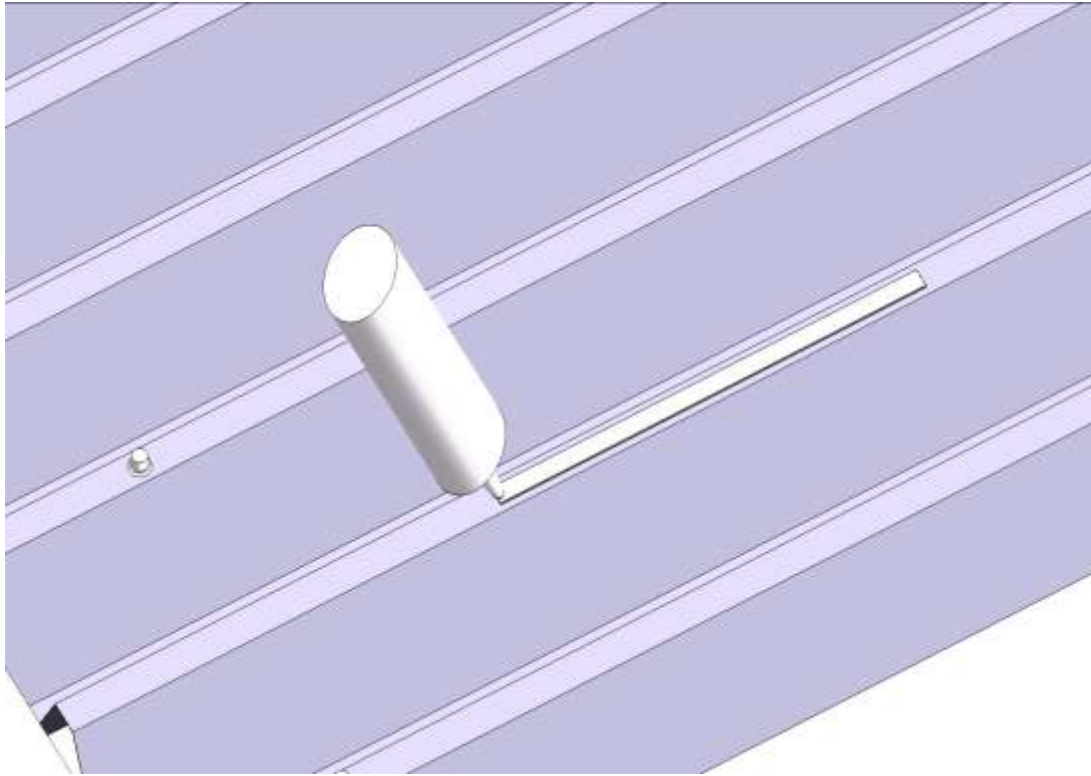
INSTALLATION METHOD - SCREW

.....

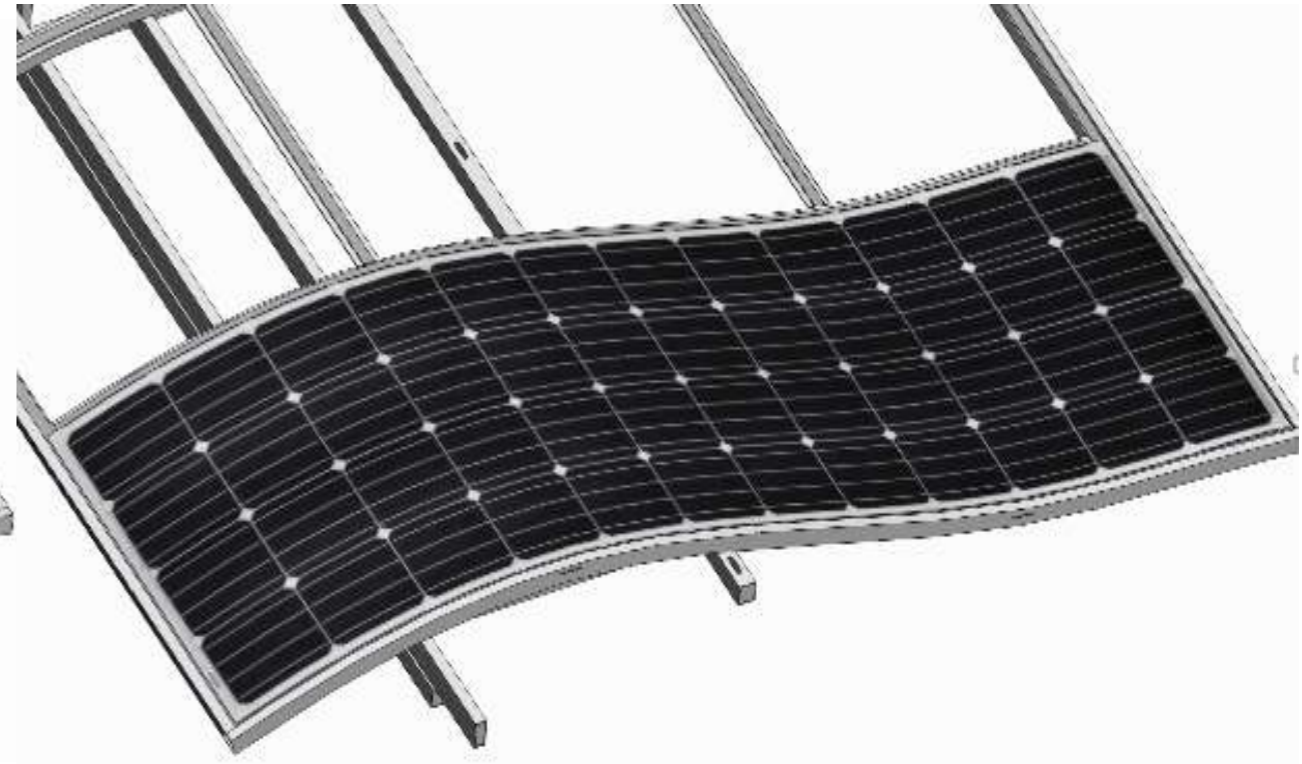


INSTALLATION METHOD-QUICKBONDING

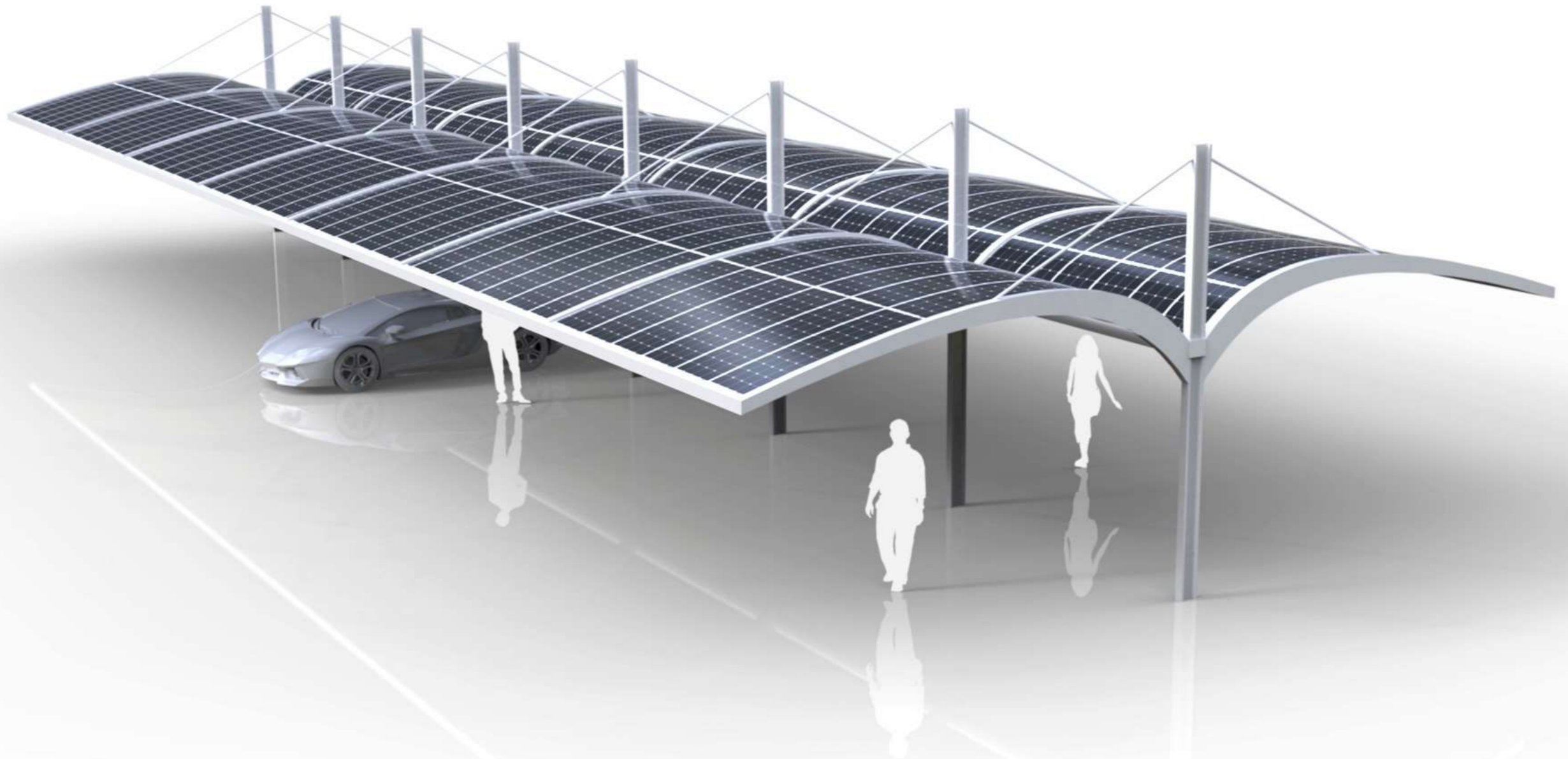
.....



INSTALLATION METHOD- QUICKBONDING & CLAMP



LIGHT WEIGHT STRUCTURES



CURVED ROOFS



RECENT INSTALLATIONS



*imagine
the
potential*

