



# RE-IMAGINING SOLAR FOR TOMORROW

.....

*July 2017*





# WE ARE ALL DEPENDANT ON SOLAR

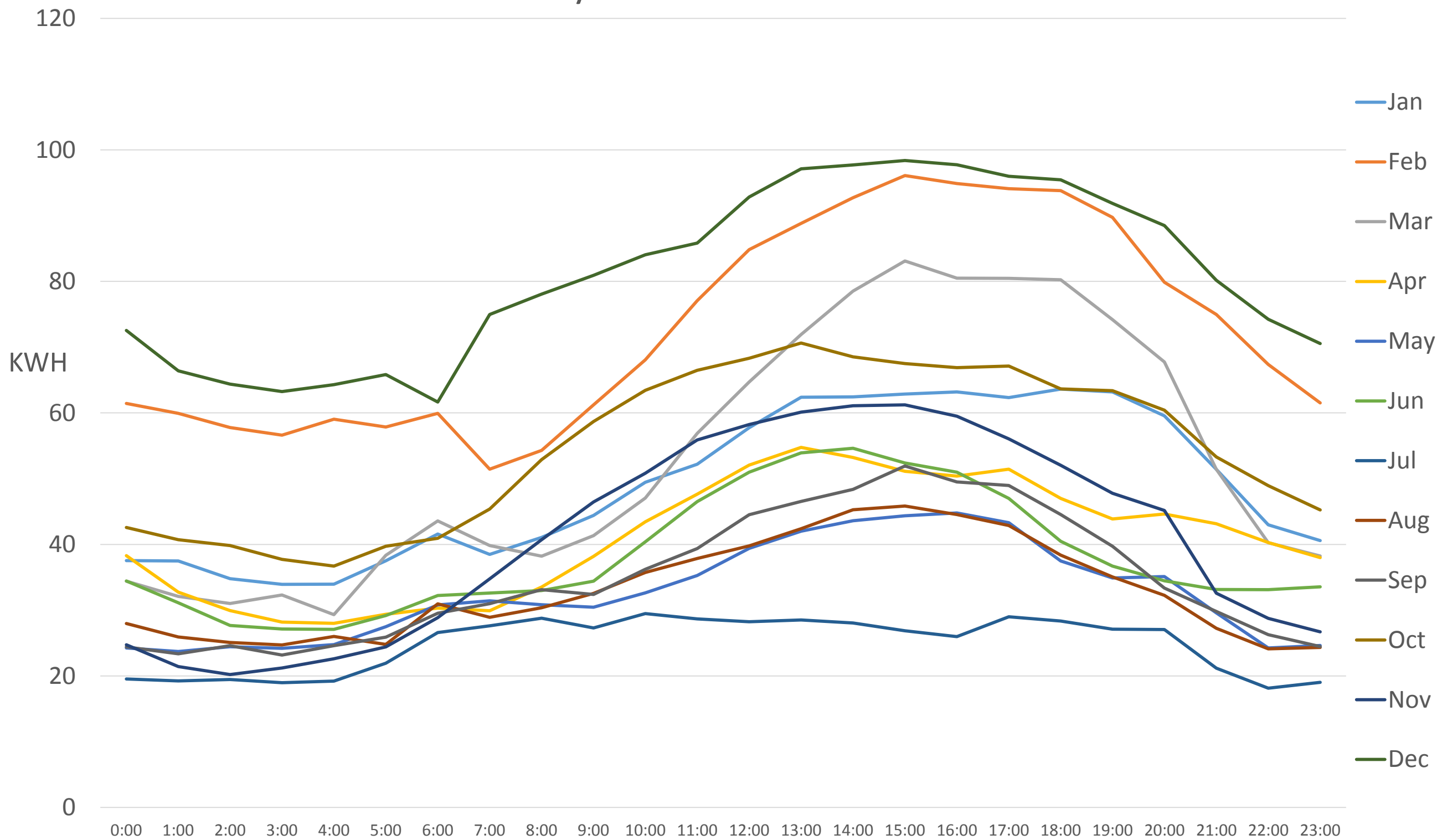


# BENEFITS OF SOLAR FOR BUSINESS

---

- Fix your day time electricity consumption from \$0.05 - \$0.08/kwh
- Reduce your electricity consumption by up to 50%
- 3 -4 year pay back
- Rebates of up to 40% for system under 100 kw
- Financed solar systems in most cases are cash flow neutral – electricity savings can cover loan repayments
- WESTPAC approved Installer

# Poultry Farm - South Australia







# IN THE LAST 40 YEARS

.....  
*solar panels have  
remained unchanged*



# TODAY'S SOLAR PANEL

.....

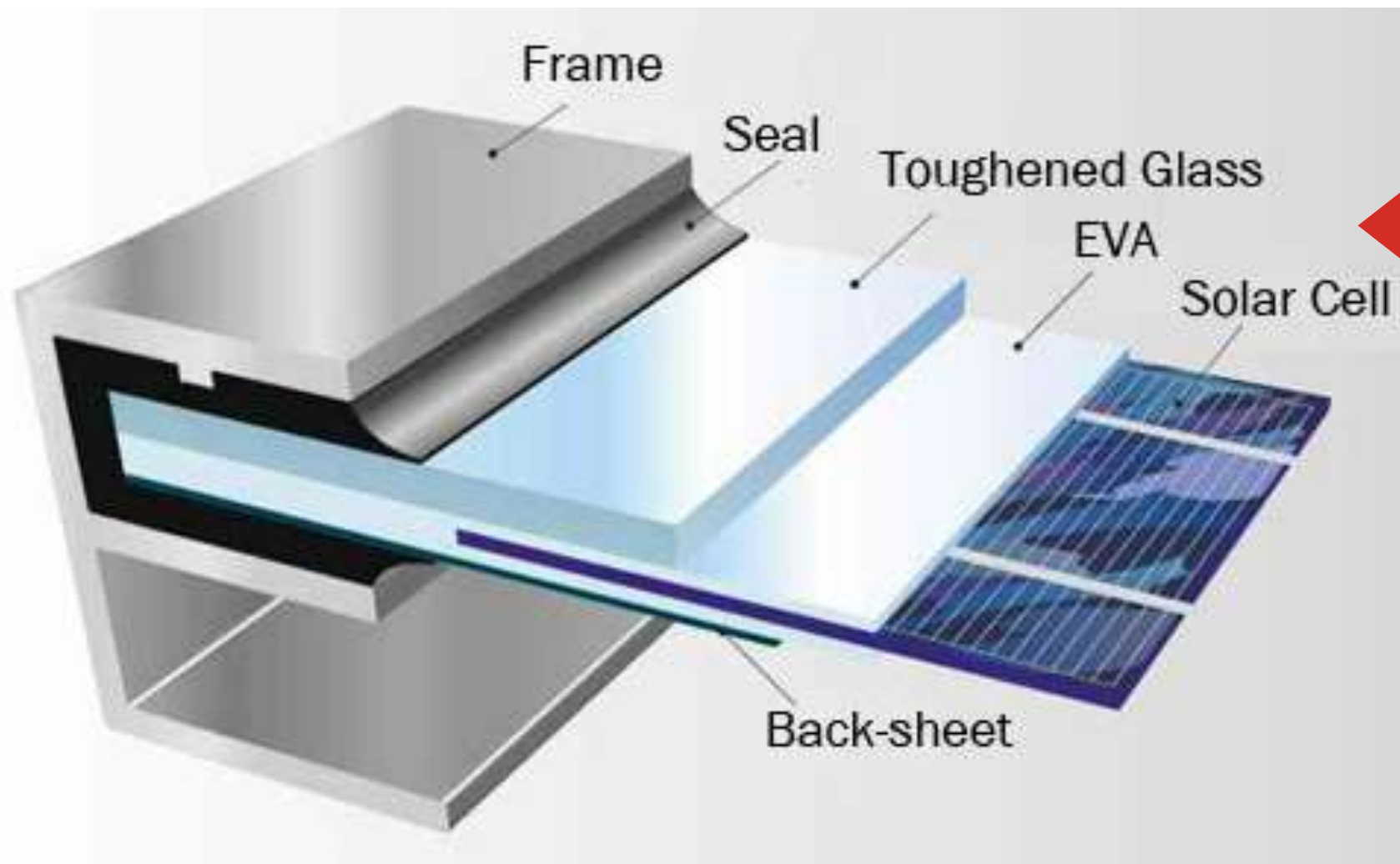


- › Aluminium frames
- › Plastic Back sheet
- › Glass top
- › Aluminium frames
- › Plastic Back sheet
- › Glass top



# WEIGHT / THICKNESS – CONVENTIONAL SOLAR PANEL

.....



Weight of solar panel = 20 kg

Weight of solar cells = 720 g

---

**Only 3.6% makes  
electricity**

---

Thickness of panel = 40 mm

Thickness of cell = 0.5 mm

---

**0.0125% makes  
electricity**

---

# LIMITATIONS

---



- Heavy
- Inflexible
- Only mass-produced in 2 sizes





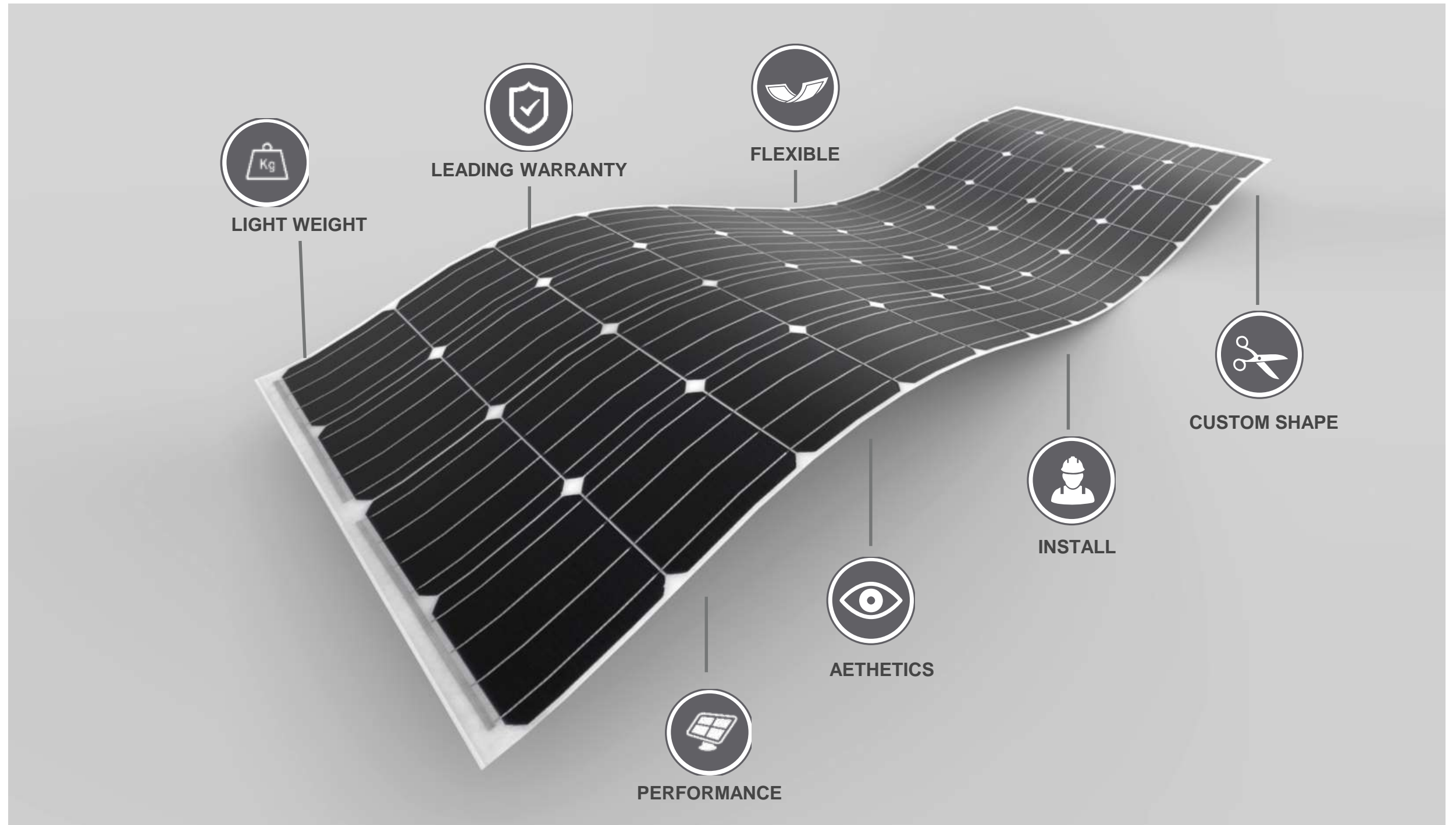
# THE SOLUTION

.....

*Turn all building skins  
into green electricity  
generators*



enerigus





# eArche – Solar Shade

.....



# eArche – Solar Carpark Canopies

.....







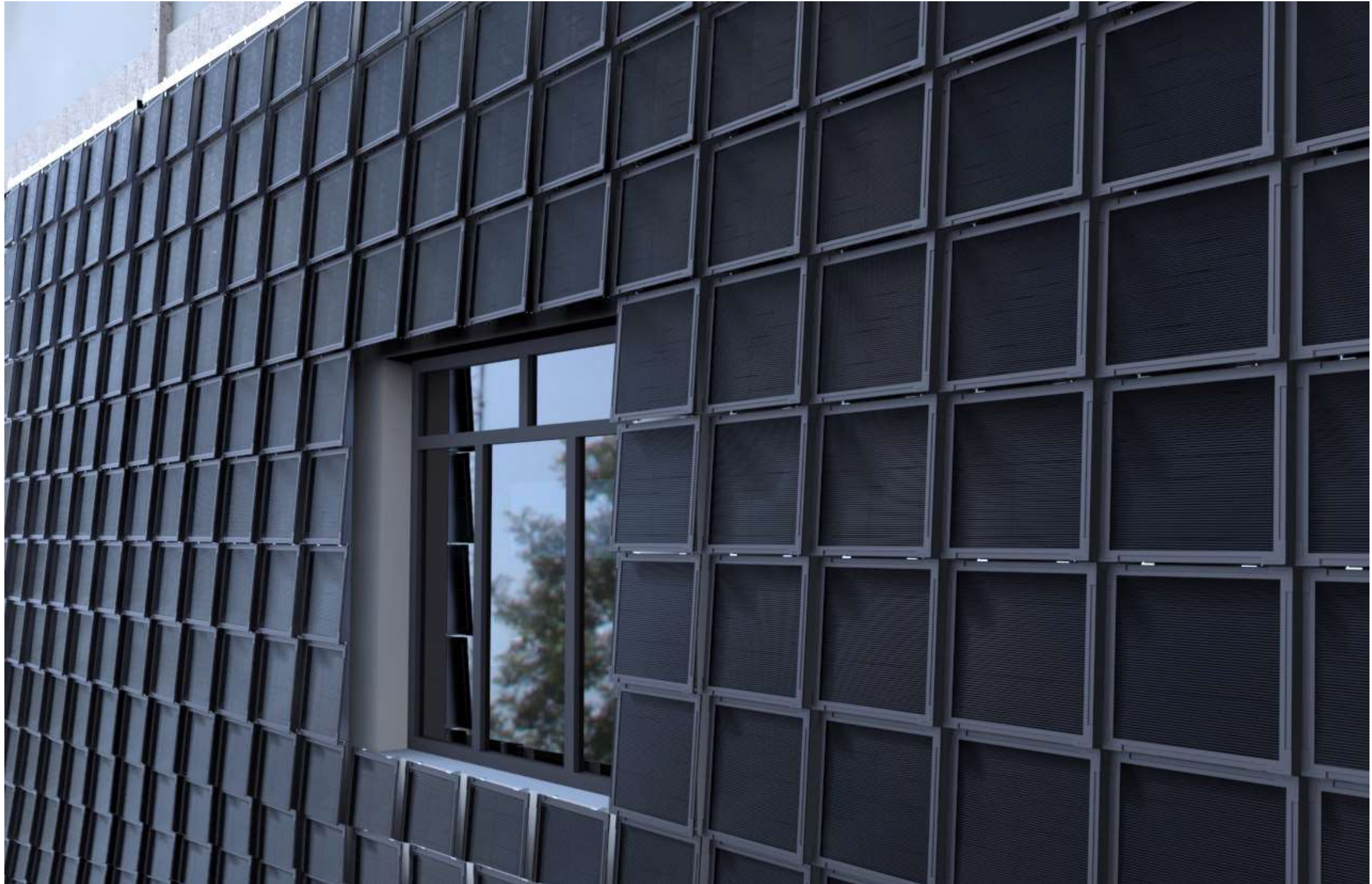
## Light weight structures partnership

---



# SOLAR FACADE

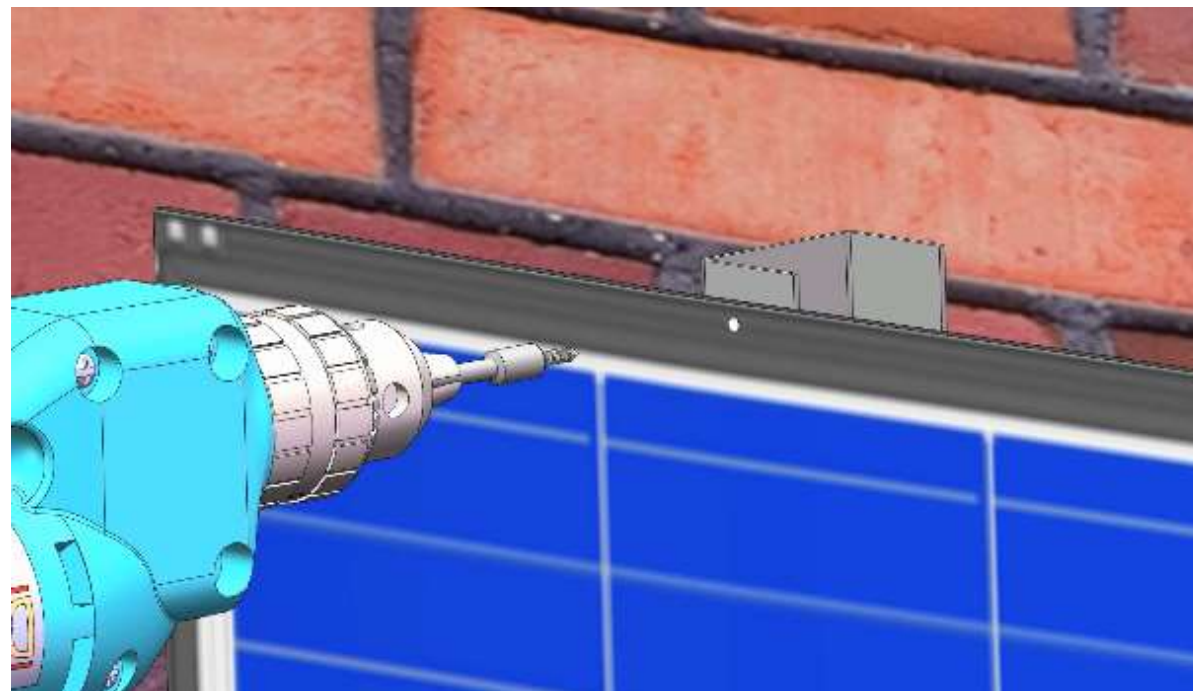
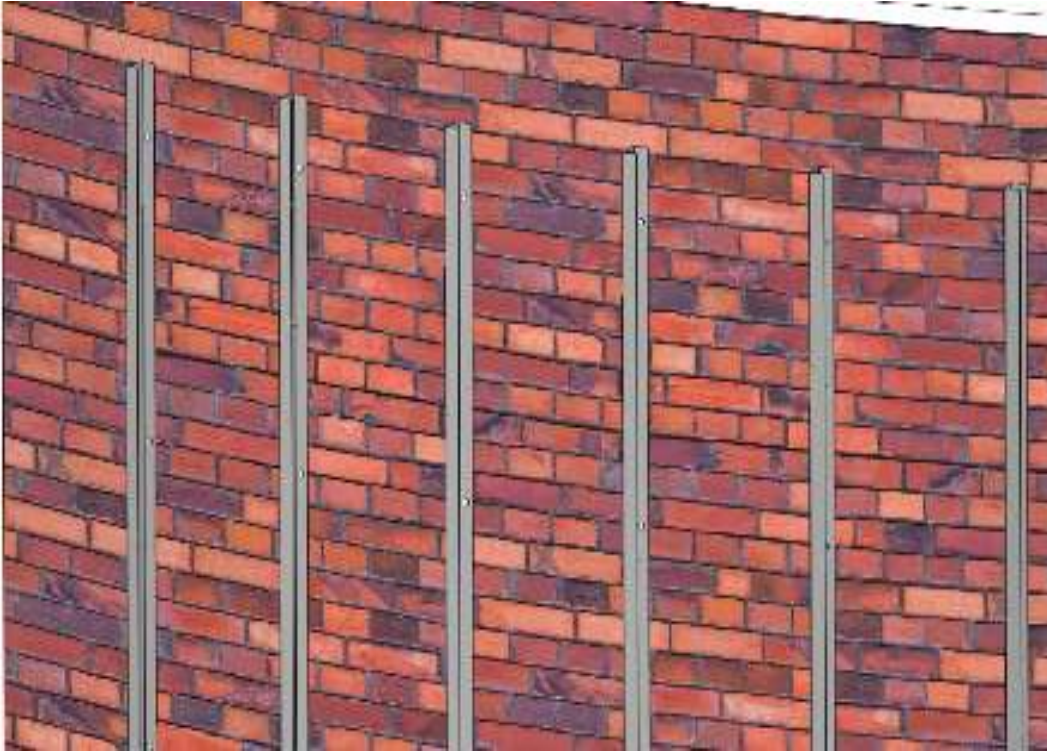
---





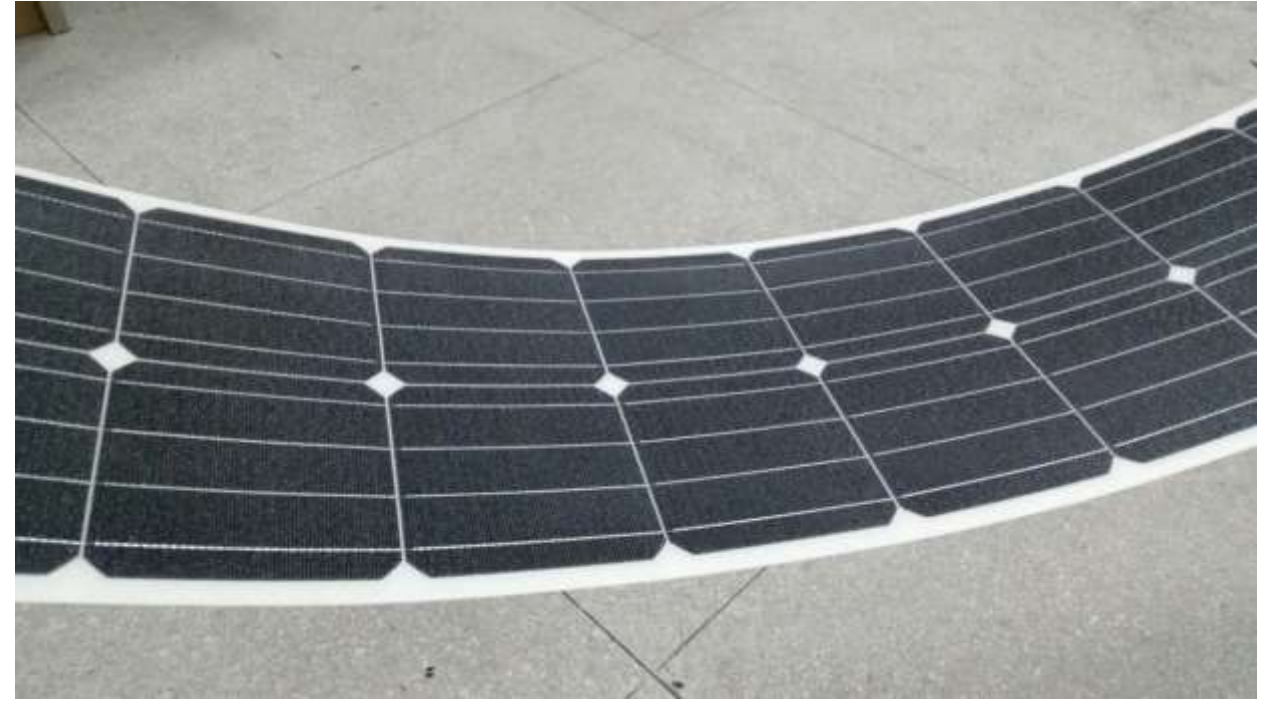
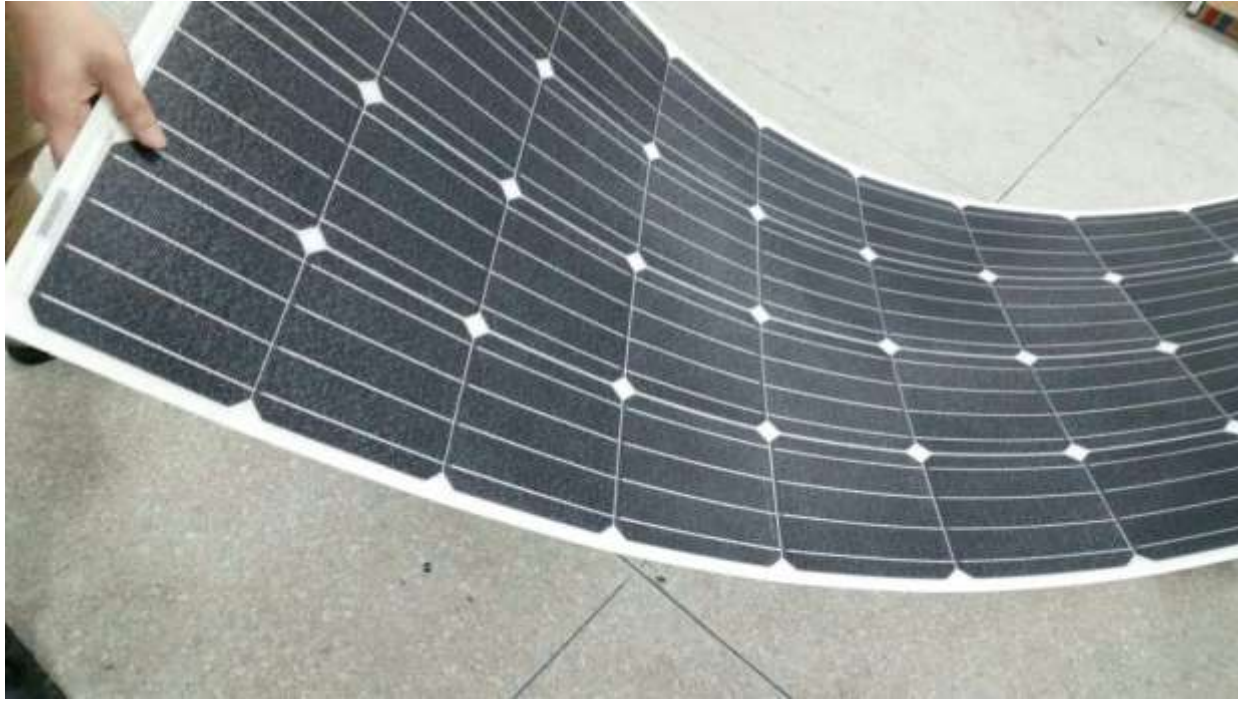
# INSTALLATION METHOD - SCREW

.....



# TAILOR MADE

.....





# KEY PRODUCT FEATURES

---

No compromises to.....



- **Performance**  
Performs the same as conventional panels



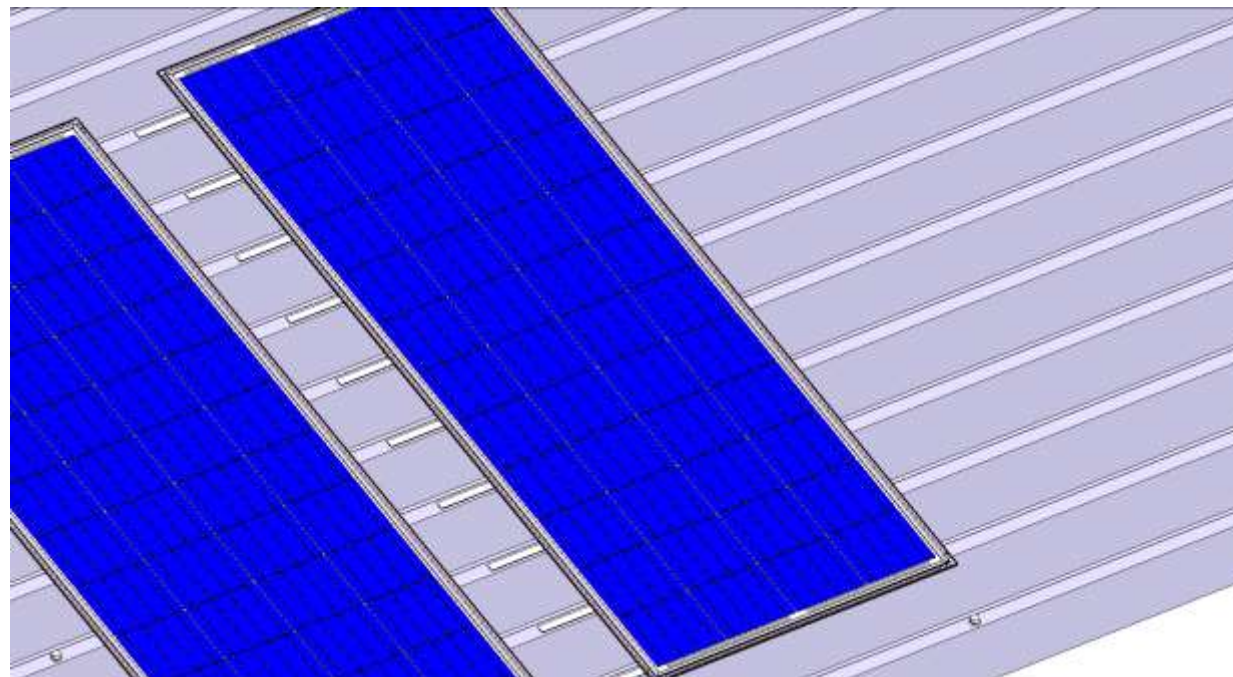
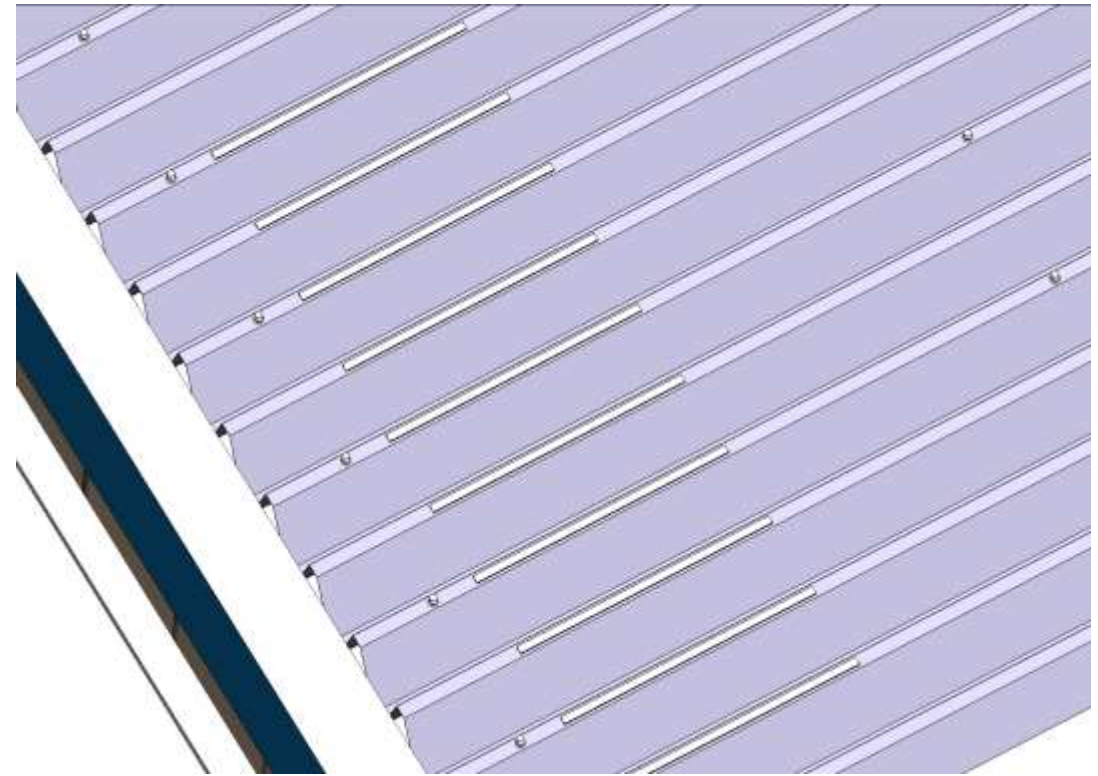
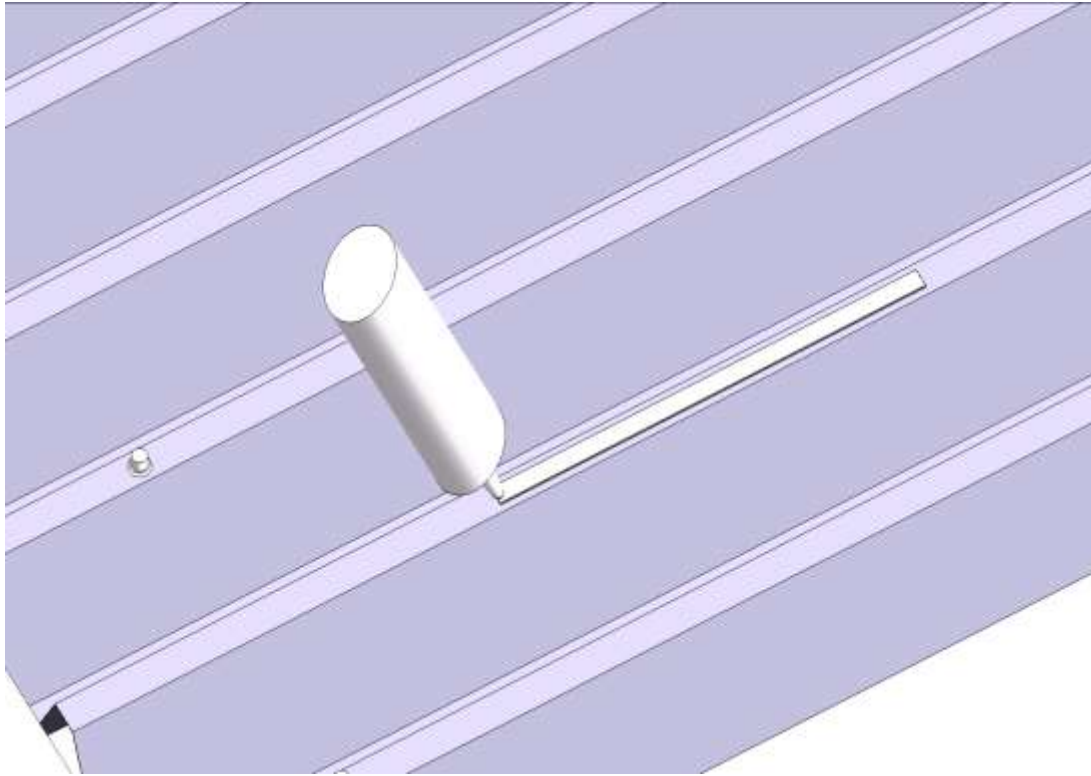
- **Price**  
Competitive with conventional panels



- **Durability**  
Passes the same durability test as conventional panels

# INSTALLATION METHOD-QUICKBONDING

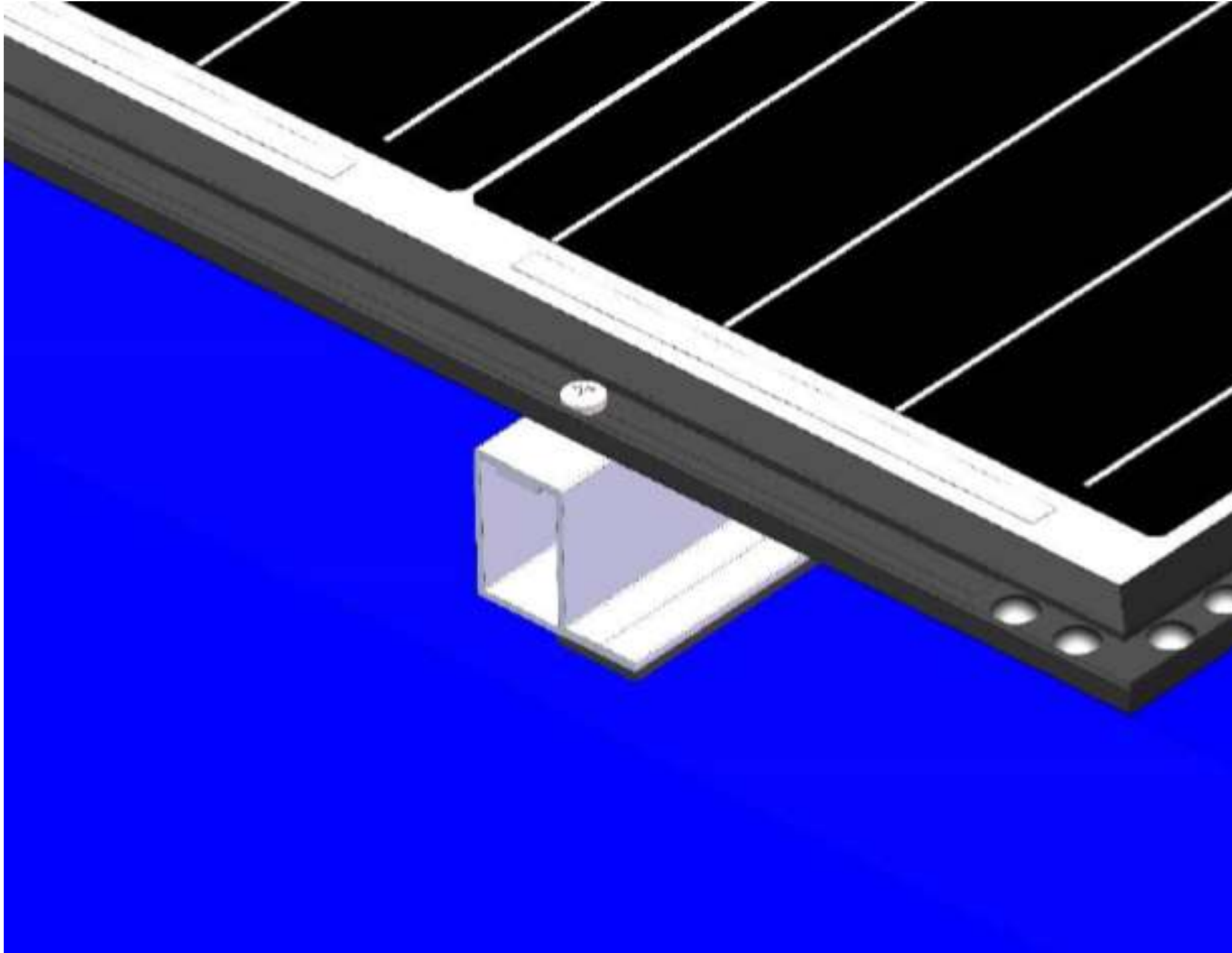
.....





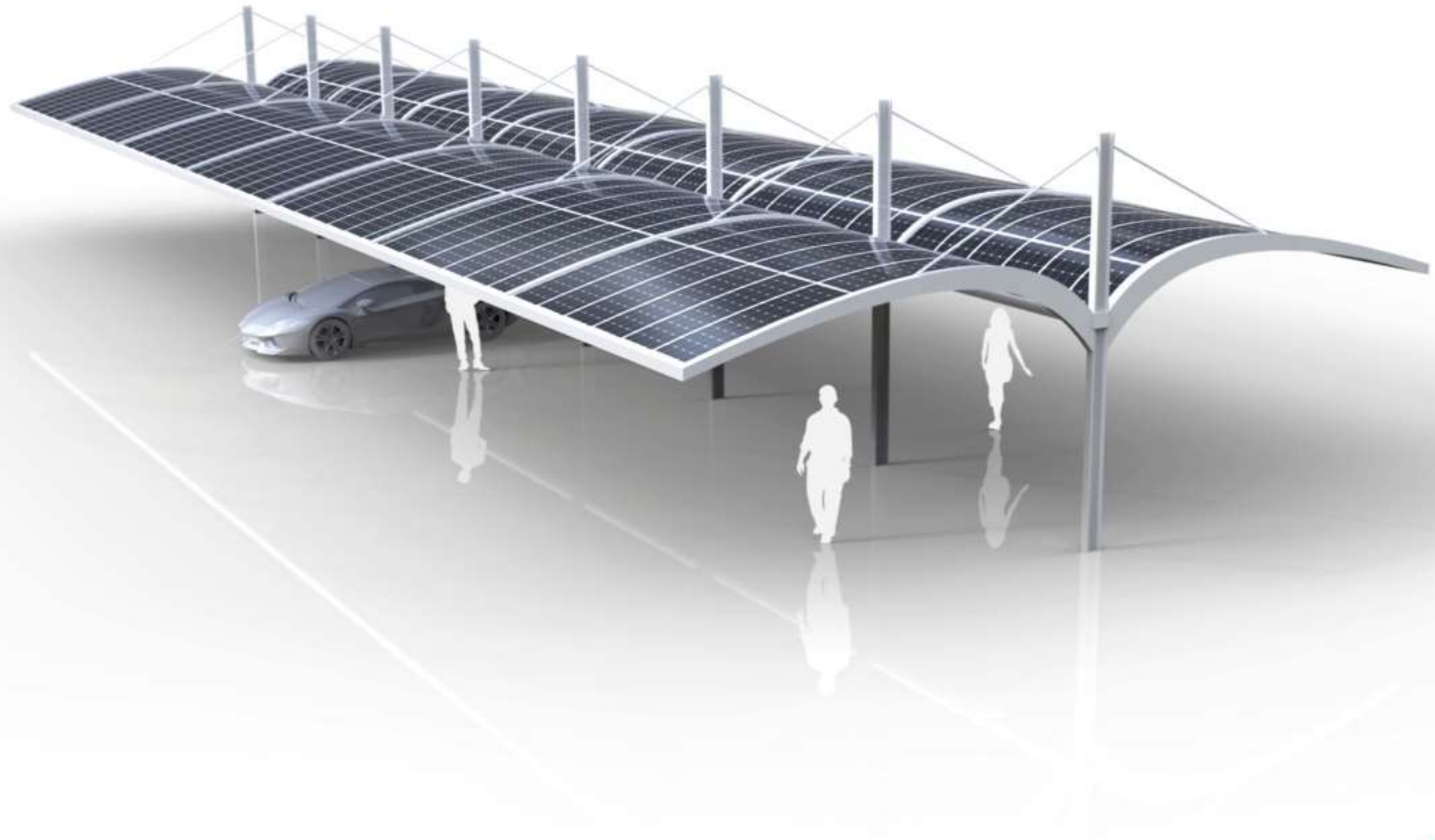
# SCREW FIX

---



# LIGHT WEIGHT STRUCTURES

.....





# LIGHT WEIGHT STRUCTURES

---



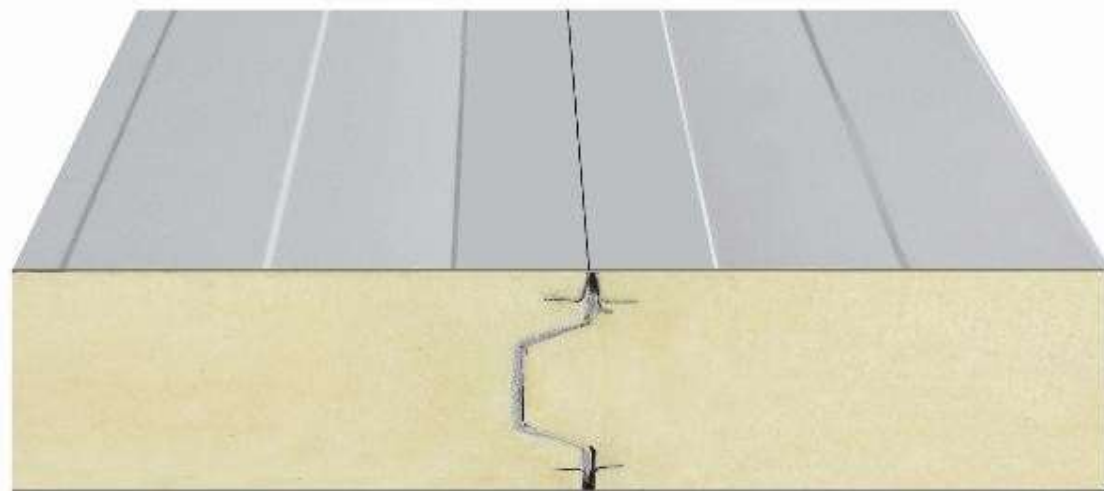
|           |          |                |   |
|-----------|----------|----------------|---|
| Area      |          | ✕              |   |
| Area      | 1,550.44 | m <sup>2</sup> | ▼ |
| Perimeter | 163.40   | m              | ▼ |

Conventional solar @ 5.9 T

eArche @ 1.7 T

# COLD STORAGE – INSULATED PANELS

---



**Bond eArche to Insulated panels on Shed roofs  
– No Penetrating**



# RECENT AUSTRALIAN INSTALLATIONS

.....



*imagine  
the  
potential*

